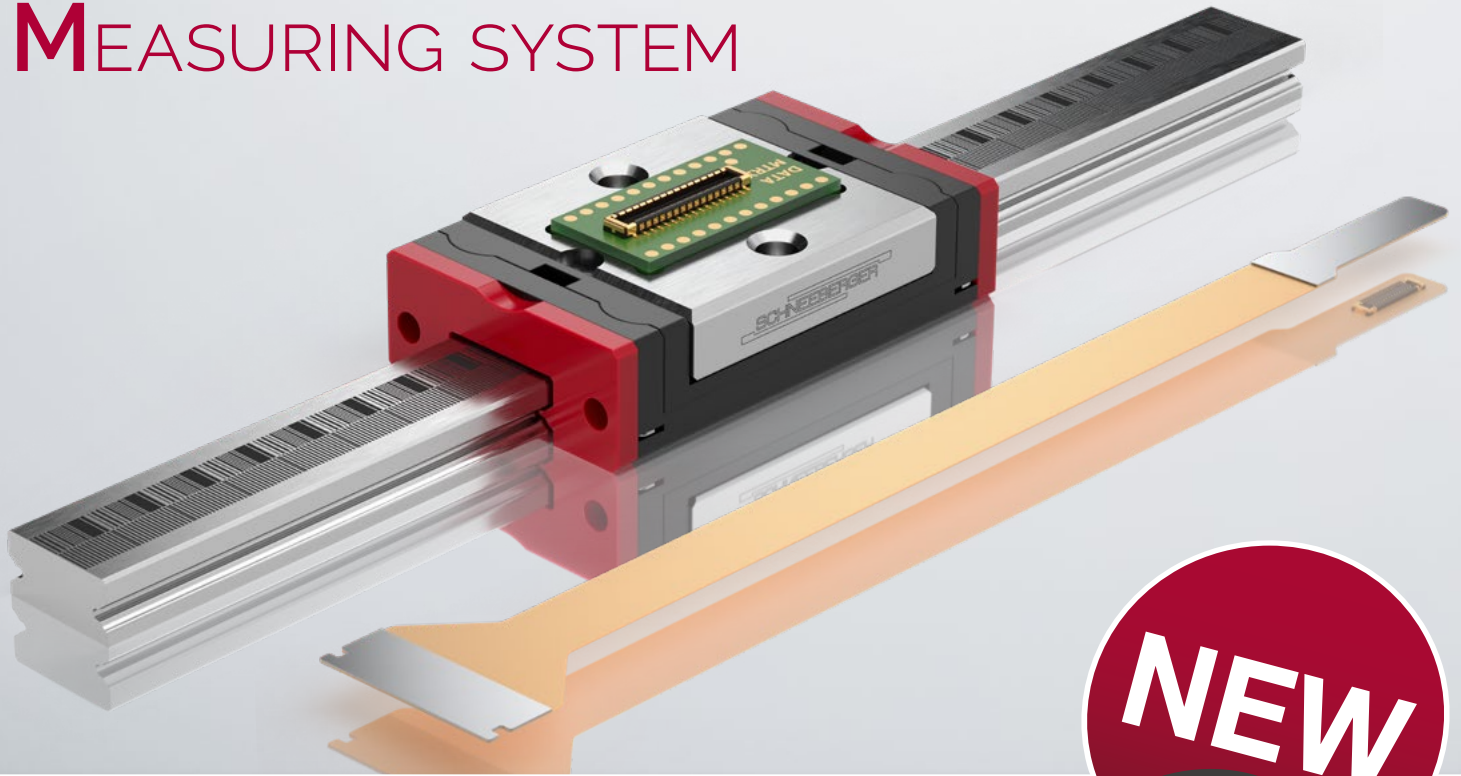
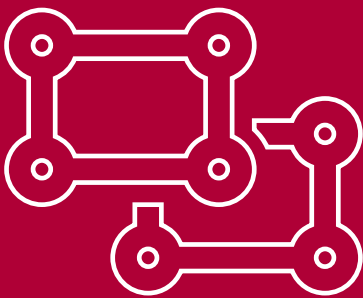


SCHNEEBERGER ABSOLUTE MEASURING SYSTEM

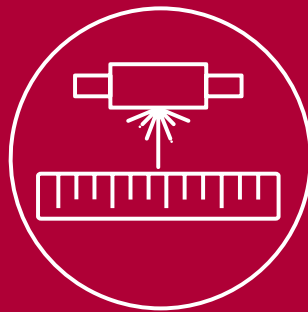


NEW

SCHNEEBERGER measuring system



All In One Solution



Smallest Integrated Absolute
Measuring System



Plug & Play

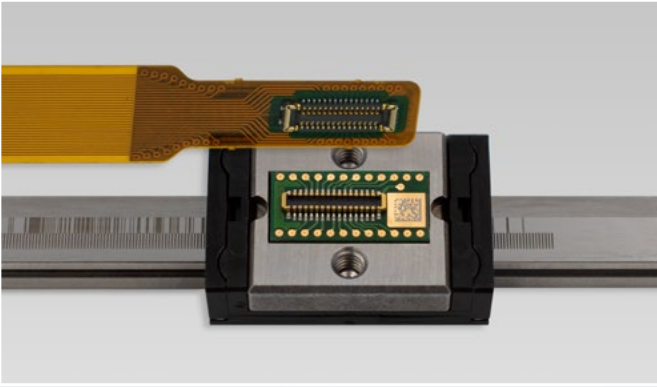
The new SCHNEEBERGER absolute measuring system is the first step into Industrial 4.0 linear bearings.

3 out of 5 Interfaces can be used simultaneously: BiSS/SSI, ABZ, UVW, SPI, analog Sin/Cos.

Available in smallest linear miniature guide MINIRAIL Size 5



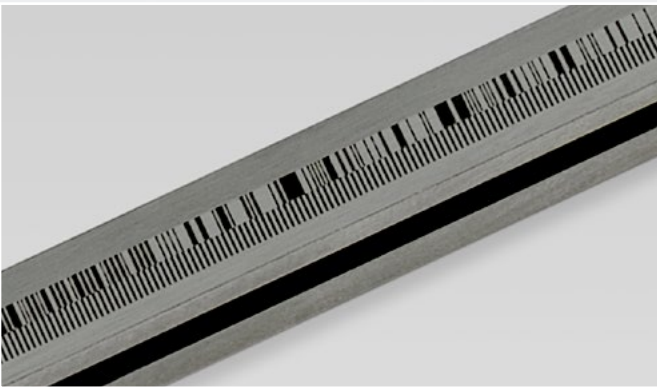
Free information
about our
products



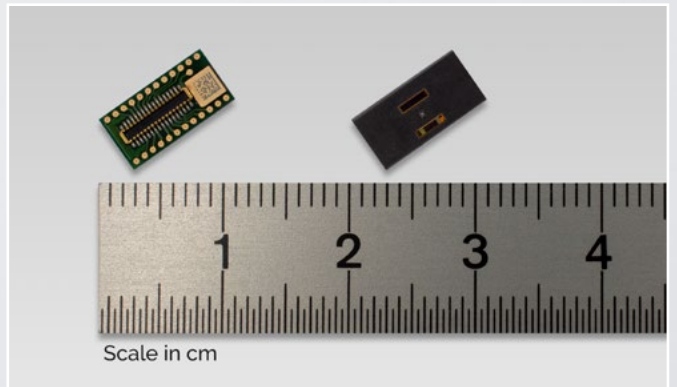
Smart Plug Connection For FPC's



Customized For Your Need



Scale Lasered On Guide Rail



Smallest Integrated Absolut Sensor

Scale lasered directly onto guide rail

- Calibrated parameter values stored on the sensor's internal EEPROM
- Sensor with miniature connector
- Customer specific flexprint design
- Signal conditioning (offset, amplitude, phase) with autocalibration
- Linear resolution 100 nm
- Absolut position accuracy: $< 2 \mu\text{m}$ (3-Sigma)
- Sensor dimension: 9.9 x 5.0 x 1.1 mm
- Patent pending

